



YOUR ACCELERATED NURSING SCHOOL EXPERIENCE EXPLAINED.



THE ULTIMATE ABSN PROGRAM GUIDE

YOUR EDUCATION IS IN GOOD HANDS.

Thank you for your interest in Northeastern University. Ranked one of the top 50 universities in the nation and one of the top 10 most innovative schools by *U.S. News & World Report*, we have a reputation for graduating nurse leaders who are prepared to make a difference in healthcare.



Whether you're a recent college graduate or a career changer, our 16-month ABSN program can fast-track you into the workforce as a practice-ready nurse.

In this guide, you'll learn everything you need to know about taking the accelerated path to nursing, from our program locations to your financial aid options.

"I definitely think that having Northeastern nursing on your job application is going to help you." Shaelyn | ABSN Program Graduate, Burlington



YOUR CHOICE OF LOCATION.

When it comes to our ABSN program, we have site locations in Burlington, **Massachusetts**, and Charlotte, **North Carolina**, each one offering three start dates a year. No matter which location you choose, you'll receive the same accredited nursing education that stands out with healthcare employers.



As an ABSN student, you and your classmates will regularly visit the site location affiliated with your program of enrollment to take proctored exams and complete nursing skills and simulation labs.

ABOUT ACCREDITATION

Our ABSN program meets the national accreditation standards set forth by the Commission on Collegiate Nursing Education (CCNE), an autonomous accrediting agency that ensures the quality and integrity of nursing programs across the country. In other words, it tells employers that your nursing education has prepared you to provide quality care, lead change, and transform healthcare.

GREATER BOSTON IS FOR NURSES.

Boston ranks #5 on the list of top 10 metro areas with the highest level of employment for registered nurses. The metro area also seems to pay pretty well, with an annual mean RN wage of \$97,130 – just don't expect this to be your starting salary as a newbie nurse.



Located in Burlington, a northwest suburb of Boston, our state-of-the-art ABSN program site welcomes hundreds of students from all over the country every year.

ABS N students have access to all of the student services available on the main Northeastern University campus in Boston, which is less than 25 miles away from our Burlington location.



Source: U.S. Bureau of Labor Statistics, May 2017

GREATER CHARLOTTE HEALTHCARE SCENE.

Healthcare accounts for one in 10 jobs in the Charlotte area, and it's an industry that's poised for growth. Of the top 15 healthcare occupations in the city, registered nurses rank #1. As of May 2017, the annual mean wage for registered nurses in North Carolina was \$62,560.

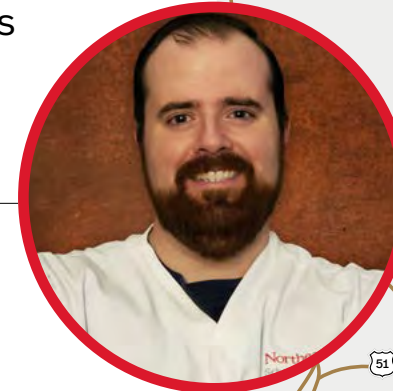


Located on the Northeastern University satellite campus in Uptown Charlotte, our state-of-the-art ABSN program site welcomes students from all over the country.

In fact, Sean moved from Alaska to North Carolina to attend our ABSN program. With more than 4,000 miles between these two states, he currently holds the program's title for traveling the farthest to go to nursing school.

Sean | ABSN Program Graduate, Charlotte

Sources: JobsEQ and U.S. Bureau of Labor Statistics



YOUR COHORT COMPOSITION.

As an ABSN student, your cohort will comprise individuals of different ages and backgrounds. Some students might be recent college graduates, while others might be making a career change. But what you'll find is that everyone is in the same boat when it comes to the rigors of nursing school.



While many incoming ABSN students have a background in biology, health sciences, or psychology, there's also a lot of academic diversity within our cohorts. We've had students who previously studied anthropology, education, finance, public policy, theater, etc.

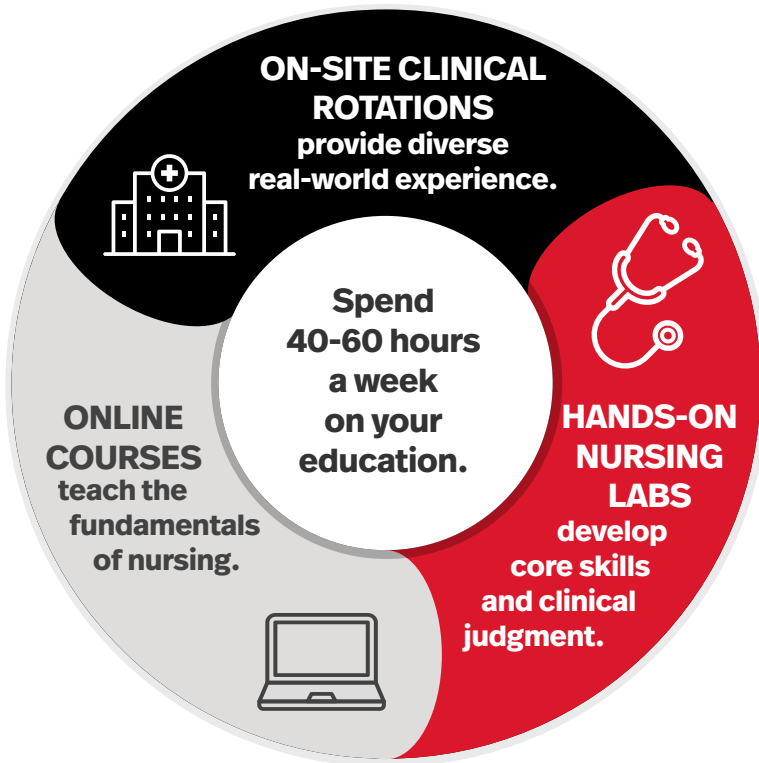
But regardless of what our ABSN students previously studied, they all come to us sharing the same goal, which is to work hard and graduate from nursing school in 16 months. You'll find a real team spirit in this type of learning environment.

"I definitely feel like my classmates are my second family. We all click with one another." Rachel | ABSN Program Student, Charlotte



YOUR PATH TO UNDERSTANDING.

Comprising 67 credit hours, our ABSN curriculum follows a blended learning format of online courses, hands-on nursing labs, and on-site clinical rotations. Together, these learning components give you the academic foundation and clinical preparedness required to sit for the NCLEX-RN® with confidence.



Our ABSN curriculum facilitates your progress from basic to complex nursing competence over the span of four, full-time semesters. By the time you graduate, you'll know how to:

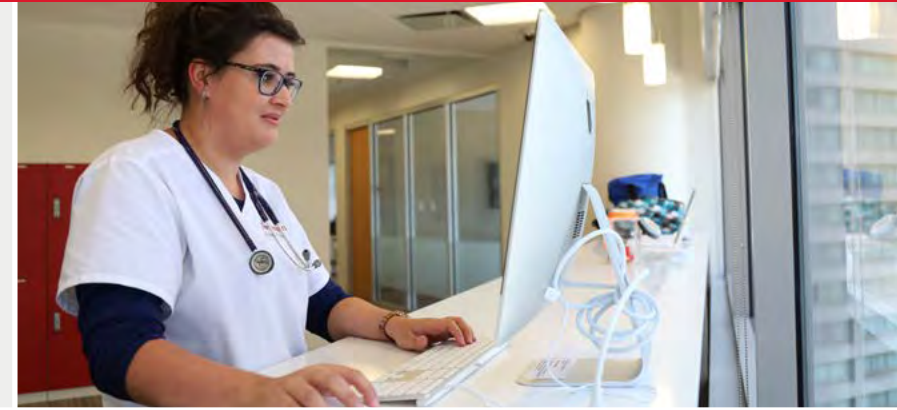
- **Provide** competent, compassionate care to diverse patient populations.
- **Deliver** care that meets the unique faith and cultural needs of patients.
- **Collaborate** with other healthcare professions to improve patient outcomes.
- **Demonstrate** clinical judgment within evidence-based practice.
- **Apply** leadership skills in the provision of patient-centered care.

“It’s a lot of work, but it’s manageable. Good time management is key to keeping pace in the program.” Ellen | ABSN Program Student, Charlotte



LEARN ON YOUR TIME.

Delivered via an intuitive e-Learning platform, our online ABSN courses set the foundation of your nursing education. While instructor deadlines still apply, these courses allow you to study at your own pace and attend “class” whenever it best fits into your daily schedule.



Even though you’re completing coursework online, you still have access to the same resources as if you were in a traditional classroom setting. Our online professors are highly accessible and passionate about what they do – so call, text, or email them as much as you need to.

“Online learning is better than classroom lectures. You can go at your own pace.” Rina | ABSN Program Graduate, Burlington

Online courses consist of different learning modules. Within each course module, there are a series of assignments you must complete within a specified timeframe. Module components typically include:

- Interactive activities
- Patient case studies
- Informational videos
- Quizzes
- Discussion boards

This mix of learning modules helps reinforce and solidify your retention of important nursing concepts.



AVOID THIS PITFALL Online coursework requires a lot of discipline. It’s very easy to get behind or distracted because you have the freedom to choose when and where you complete your assignments and lectures. To help keep you on track, stick to a regular study routine.

APPLY YOUR SKILLS AND THINK LIKE A NURSE.

ABSN students regularly attend skills and simulation labs at our program site. In these labs, instructors teach you how to safely and effectively put the core concepts you learned online into practice. Labs also help remove the fear of the unknown, making it easier to transition into clinicals.



SKILLS LABS

Skills lab features advanced equipment, medical supplies, and manikins so students can practice their clinical skills in a contextual setting without the fear of harming an actual patient. Concepts covered include:

- Hand-washing practices
- Hospital bed changes
- Catheterization
- Nasogastric tube insertions
- Intermuscular injections

SIMULATION LABS

Simulation labs start off with the basics of nursing practice, such as patient safety, physical assessment, and interprofessional communication. Subsequent simulations are more complex, involving multifaceted patient care scenarios. Overall, simulation exercises:

- **Require** you to integrate theory, practice, and reasoning in real time.
- **Challenge** you to problem-solve, collaborate, and think critically.
- **Prepare** you for clinical rotations in diverse healthcare settings.



MISTAKES HAPPEN During labs, it's totally fine to make mistakes. Our instructors view errors as valuable learning opportunities. Just be sure to take advantage of our open lab hours to practice and hone your nursing skills.

EXPERIENCE YOUR FUTURE IN NURSING.

ABSN students complete six clinical rotations, each one comprising 72 hours of practical experience. During these rotations, you can expect to perform health assessments, develop care plans, take vitals, and the like – all under the watchful eye of an instructor.



Our diverse clinical placement sites, which include hospitals (big and small), nursing homes, and community clinics, allow you to gain real-world experience in a variety of healthcare sectors and specialties, such as:

- Women's care
- Family care
- Adult care
- Mental health
- Public health

ROLE TRANSITION

During your fourth semester in the program, you'll complete a role transition experience where, under the guidance of a preceptor, you'll gain concentrated experience in a particular area of nursing practice.



IT'S IMPORTANT to get to your clinical rotations by car because many start as early as 7 a.m. Relying on public transportation is tough.

"I learned so much during my preceptorship. I worked a dozen, 12-hour shifts and was taking patients by myself." Megan | ABSN Program Graduate, Burlington



Please note that we cannot guarantee placement in a specific hospital or healthcare facility.

PREPARE TO EARN YOUR RN TITLE.

To legally practice the nursing profession, you must pass the NCLEX-RN after earning your BSN. Administered by the National Council of State Boards of Nursing, this exam helps to ensure that every nursing school graduate has the knowledge and skills to deliver safe, effective patient care at the entry level. Think of it as an extra layer of public protection.



Different from any college exam you've taken before, the NCLEX asks complex multiple-choice questions to gauge how well you apply your critical thinking skills when making clinical judgments. You'll come across questions where every answer is correct, and you have to identify the one that is most correct.

To help get you ready for the exam, we:

- **Integrate** NCLEX preparation into our curriculum.
- **Feature** NCLEX-style questions in all of our exams.
- **Provide** three days of Kaplan test prep.

“Northeastern provides an excellent education. It definitely prepared me for the NCLEX. I passed in 75 questions.” Stephen | ABSN Program Graduate, Burlington



BUILD YOUR SUPPORT NETWORK.

As an ABSN student, you'll have a lot on your plate, spending up to 60 hours a week on your education. So, unless you have special superpowers, it's best that you not tackle the pressures of nursing school alone.



NURSING FACULTY

Connect with your professors/instructors often to make sure you understand their expectations with the curriculum. By doing so, you'll get to know them better, making it more comfortable for you to ask them for help when you need it.

FELLOW CLASSMATES

Forming friendships with other students in your cohort will help you stay engaged with the coursework and motivate you to succeed. Furthermore, if you're ever struggling with a nursing concept, your classmates can share their insights and help you with study strategies.

FAMILY

Prepare your family for all of the changes that will take place when you start nursing school. Daily routines will change, household responsibilities will change, and sacrifices will be made. Sit down with your family and lay out the type of support you need from them to be successful in school.

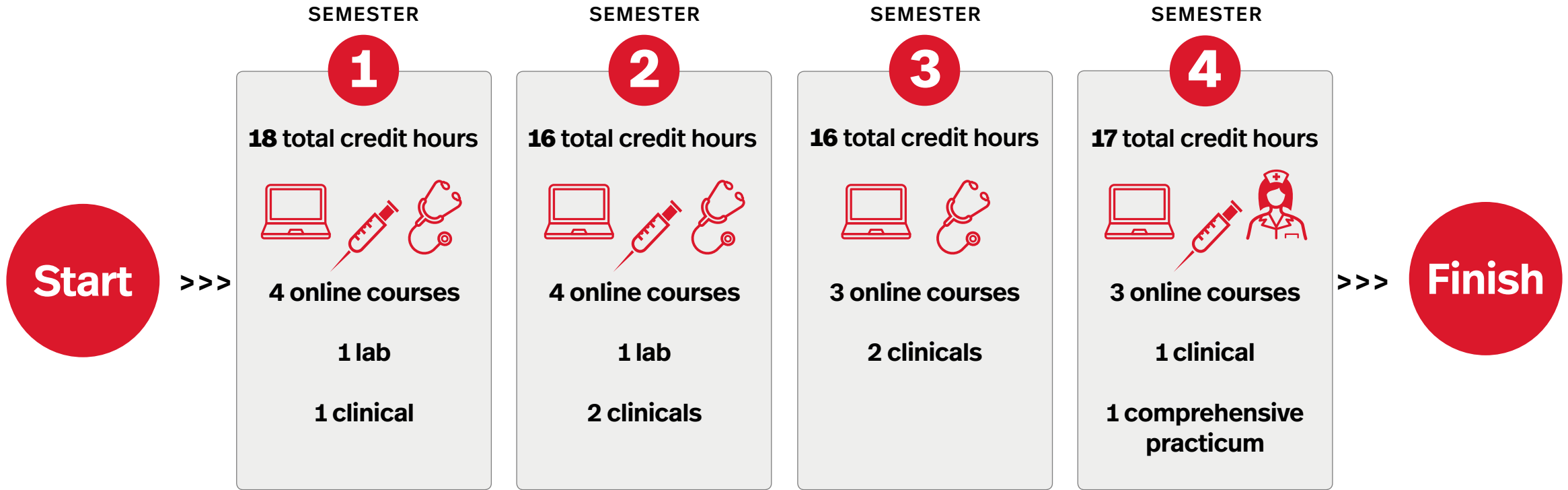


“The faculty are very willing to go out of their way to help you.”

Sarah | ABSN Program Graduate, Charlotte

A MAP OF YOUR ACCELERATED JOURNEY.

As an ABSN student, you'll learn the fundamentals and theories of nursing practice (online courses), convert that knowledge into psychomotor skills (nursing skills labs), and then be able to pull everything together within the scope of diverse clinical practice (nursing simulation labs and clinical rotations).



TIPS TO HELP YOU SUCCEED IN SCHOOL.

Nursing school is one of the most challenging education paths available. It has to be. People trust nurses with their lives. Here are some tips that will help see you through.



TIME MANAGEMENT

At the start of school, you'll probably feel like you're drowning in a sea of reading assignments, lab activities, exams, and the like. To stay afloat, you must plan ahead, stay organized, and maximize every minute of your day. A comprehensive student planner can help with all of this.

SHUT-EYE

While it's true you need to put certain aspects of your life on hold during nursing school, sleep shouldn't be one of them. After all, the more sleep you get, the better nursing student you'll be. Because when you're tired, you're less likely to remember important facts and comprehend complex concepts.

SELF-CARE

Don't get so wrapped up in your schoolwork that your self-care falls to the wayside. Self-care is what helps keep nursing students sane and focused. There are plenty of ways you can relax and recharge, from taking a walk to watching a movie.

SELF-TALK

Throughout the program, try to practice positive self-talk. It can be a great way to boost your confidence. Think of positive self-talk as the optimistic voice inside your head that looks on the bright side of life, telling you that you're going to ace that exam.

“My biggest struggle has definitely been self-care. Taking care of yourself is so important. You can't live off of coffee.”

Miranda | ABSN Program Student, Charlotte



SET YOUR EDUCATION IN MOTION.

By downloading this guide, you took the first step of the admissions process. Someone from admissions will contact you shortly. But don't worry, it's nothing formal. He or she just wants to get to know you to see if the program is the right fit for you. If it is, this individual will be your main point of contact throughout the admissions process.



During your initial call with an admissions counselor, he or she will want to know a little bit about you and why you want to become a nurse. Subsequent calls will involve reviewing your academic transcripts and discussing prerequisite requirements.

If it turns out that our program is a good fit for you and vice versa, this counselor will champion your entry into nursing school, providing highly personalized support every step of the way.

BASIC ADMISSIONS ROADMAP

- **Verify** program eligibility with your admissions counselor.
- **Complete** your prerequisites within the specified requirements.
- **Upload** all of your application materials to the NursingCAS portal.
- **Have** your counselor review your application prior to submission.
- **Submit** your completed application by the specified deadline.

“My admissions process was fantastic and very straightforward.”

Patti | ABSN Program Graduate, Charlotte



YOUR OPTIONS FOR FINANCING NURSING SCHOOL.

Unfortunately, ABSN students don't qualify for federal, state, or university grants. Before applying to our ABSN program, you'll want to see if you qualify for a federal loan, private loan, or third-party scholarship.



FEDERAL DIRECT LOANS

Given the various low-interest loan options available through the U.S. Department of Education, you should apply for financial aid by submitting a FAFSA.

PRIVATE LOANS

Federal student aid typically doesn't cover the total cost of attending an ABSN program. So be sure to check out banks and credit unions that offer private loans with low interest and good terms.

THIRD-PARTY SCHOLARSHIPS

National scholarships are available to qualified students pursuing an undergraduate degree in nursing. Learn about them on websites such as the American Association of Colleges of Nursing, Nurse Corps Scholarship Programs, and FastWeb.

FINANCIAL AID SUPPORT NETWORK

Our Student Financial Services team can help you identify the best options for financing your Northeastern education. The team is available to assist you with anything and everything associated with financial aid.



KEEP IN MIND Aside from program tuition and fees, you'll also need to invest in supplies, uniforms, and test prep software to best prepare for the profession.

YOU ARE READY TO APPLY.

Once you've satisfied the admissions requirements and have a financing plan in place, you're ready to start putting your application together, targeting a program start date in January, May, or September at your preferred location.



Be sure to work closely with your counselor during the application process. He or she will walk you through all of the steps to make sure you submit the most competitive application possible.


As part of the nursing school application process, you'll need to supply the following materials:

- **Official transcripts** from all higher learning institutions attended.
- **Relevant test scores** (e.g., iBT TOEFL scores, if applicable).
- **Three letters** of academic/professional recommendation.
- **A goal statement** that describes your interest in nursing.
- **A short video essay** to accompany your goal statement.
- **A current resume** that highlights any skills relevant to nursing.

GETTING ACCEPTED

Once accepted into our ABSN program, we'll have you attend an orientation before classes begin. During this program orientation, you'll meet other students in your cohort, receive your student ID, and get an overall lay of the land.



 We also encourage you to join our private Facebook group to see what advice current ABSN students might have for best navigating the the program. Ask your counselor how to join.



EXPECT TO RECEIVE an admissions decision from us within just a few weeks of applying. If you're relocating for the program, be sure to ask your counselor about our relocation resources.

CONGRATS, YOU GRADUATED. NOW WHAT?

Once you've completed our ABSN program and passed the NCLEX-RN exam, you'll be ready to enter one of the most trusted, rewarding, and high-demand occupations available today.



HIGH WAGES

As of May 2017, the U.S. Bureau of Labor Statistics listed the annual median pay for nurses as \$70,000 per year. Furthermore, in its 2018 article titled "The U.S. nursing boom is just getting started," *Yahoo Finance* listed "high-wage" jobs as those that pay at least \$23.24 per hour, with registered nurses earning a median take-home pay of \$33.55 per hour.

DIVERSE OPPORTUNITIES

While hospitals are the largest employers of registered nurses, you'll find these caregivers hard at work in a variety of inpatient and outpatient settings as well as specialty areas. Not to mention, BSN-prepared nurses who go on to pursue a more advanced education have access to some of the highest paying jobs in nursing, including nurse anesthetist and nurse practitioner.

GROWING OCCUPATION

Registered nurses currently represent the largest segment of healthcare workers, and it looks like that's where they'll stay for quite some time. According to the U.S. Bureau of Labor Statistics, registered nurse employment will grow by 15% between 2016 and 2026.

Northeastern University
Bouvé College of Health Sciences
School of Nursing

BURLINGTON ABSN PROGRAM

5 Burlington Woods Drive, Suite 205
Burlington, Massachusetts 01803
866.892.3819
absn.northeastern.edu/boston

CHARLOTTE ABSN PROGRAM

101 North Tryon Street, Suite 1100
Charlotte, North Carolina 28246
866.892.3819
absn.northeastern.edu/charlotte